

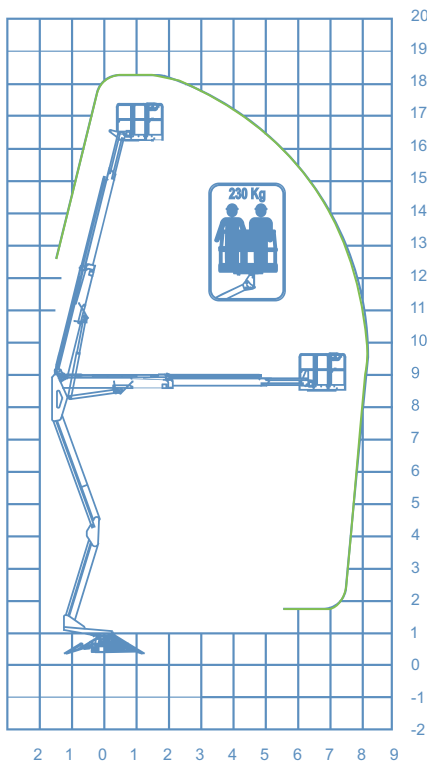


STANDARD ACCESSORIES

DATA SHEET

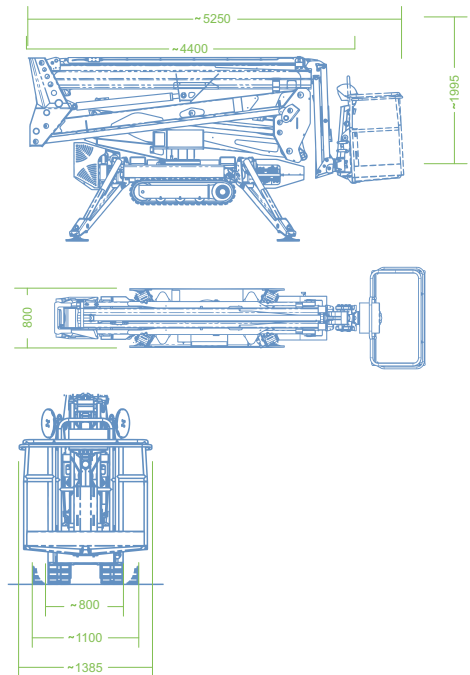
- Crawler hydraulically extensible
- White antimark tracks
- Electric hour-counter
- Manual hand pump
- 230V electric socket in the basket
- Multifunction telecontrol
- Auxiliary electric pump 230V-50Hz
- Flanged holding valves
- Diesel engine

WORKING DIAGRAM



- OUTRIGGERS**
Z+Z
- WORKING HEIGHT**
18,30 mt
- BASKET HEIGHT**
16,30 mt
- MAX OUTREACH**
8,20 mt
- BASKET LOAD CAPACITY**
230 kg
- BASKET SIZE**
1400 x 700 x 1100 mm
- CONTROLS**
Electric
- TURRET ROTATION**
700°
- GVW**
2,5 ton
- DIMENSIONS**
2850 X 2850 MM
- BASKET ROTATION**
60° + 60°

DIMENSIONS





SOCAGE, AERIAL PLATFORM CONSTRUCTOR ALL OVER THE WORLD



Socage, based in Modena, Italy, produces and sells truck mounted Aerial Working Platforms all over the world. With more than 40 years of experience, Socage is among the top experienced companies in the field.

Our products are of high quality and technologically advanced. Most notably, we stand out in the market for our reliability, ease of use, and performance.



forSteel



MY SOCAGE

From your smartphone, tablet or pc via My Socage you can:

- Connect your platforms to Socage's software
- Find spare parts quickly and easily
- Request remote diagnosis via Socage Connect
- Manage the working hours of your platforms

My Socage connects your platforms with what matters the most to you.

Welcome to Socage Universe

